



# new energy economy

Addressing the Climate Challenge  
With Bold Solutions

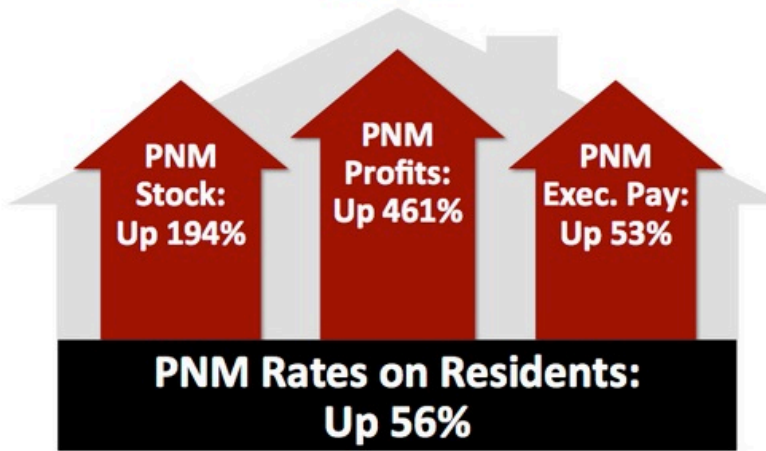
[Home](#) » [Current Campaigns](#)

## PNM Rate Case

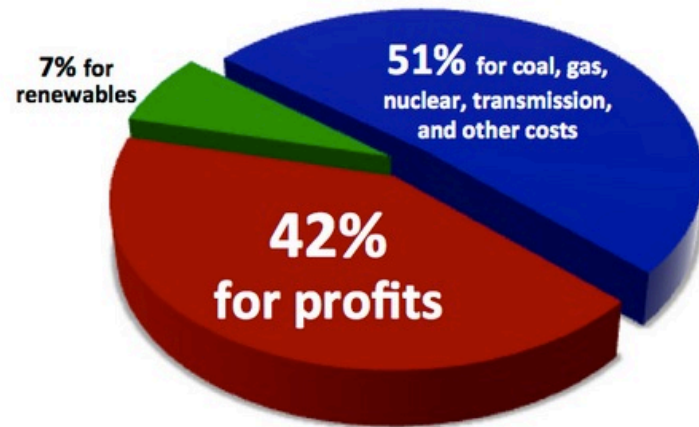
### ***IN THE PUBLIC INTEREST?***

**New Report Released: [SALESFORCE https://login.salesforce.com/](https://login.salesforce.com/) Financial Practices and Priorities**

**PNM Rate Increases Drive Corporate Gain  
2008-2014**



**How PNM Has Used Its Rate Increases  
on NM Residents and Businesses (2008-14)**



[CLICK HERE FOR CAMPAIGN NEWS AND UPDATES](#)

[CLICK HERE FOR CAMPAIGN RESOURCES](#)

[Click here](#) to read New Energy Economy's May 23, 2016 Brief-In-Chief as part of their rate case.

**PNM'S Next Big Rate Hike**


Last December, the PRC gave PNM a green light for more coal and more nuclear even though solar and wind energy are readily available, cheaper, better for our health and the environment, and create local family-supporting jobs.

Now, PNM wants another rubber stamp from the PRC for a \$123.5 million rate hike. A few key facts:

1. **More expensive power.** Rates for residents would increase another 15.83% on top of the 57% increase in residential rates since 2008.
2. **Steep mandatory fixed fees.** Monthly fees that PNM customers have to pay regardless of electricity usage would increase by 163%. They'd be higher than any of PNM's utility peers' fixed charges in the region.
3. **More coal.** PNM bill-payers would be locked into paying over *a half billion dollars* for coal for the Four Corners Power Plant for the next 15 years. We'd have to pay every penny even if the plant were transitioned sooner to cleaner sources.
4. **More nuclear.** PNM customers would pay for more out-of-state nuclear power for 30 years without knowing if other options would be cheaper. PNM did not compare the nuclear costs against *any* other energy alternatives.
5. **Executive pay.** The top five executives at PNM make \$9 million per year. The average Navajo household living with the pollution from PNM's coal operations survives on \$7,200 per year.

---

Do you like this page?

 Like Be the first of your friends to like this.

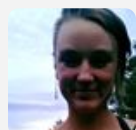
 Tweet

 G+1

---

Showing 1 reaction

Follow Reactions 



Alex Renirie published this page in  
[Current Campaigns](#)

11 months ago

SIGN UP

EVENTS

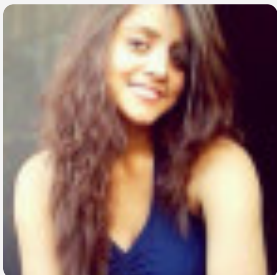
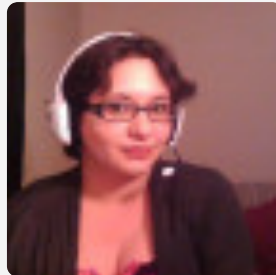
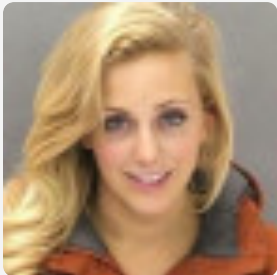
DONATE

CONNECT

You can join us using



PULSE



Robert Shrephy just joined.



New Energy E...

1.7K likes



You and 72 other friends like this



 Follow @NewEnergyNM

343 East Alameda Santa Fe, NM 87501

[newenergyeconomy@gmail.com](mailto:newenergyeconomy@gmail.com)

(505)989-7262

SIGN IN WITH [FACEBOOK](#), [TWITTER](#) OR [EMAIL](#).  
CREATED WITH [NATIONBUILDER](#) - THEME BY [TECTONICA](#)

[ABOUT US](#)   [OUR STRATEGY](#)   [CURRENT CAMPAIGNS](#)